

GATE SCHEDULE					
GATE NUMBER	GATE SIZE WIDTH & HEIGHT	DOOR TYPE	DETAIL NUMBER		REMARKS
1	(PR) 8'-0" X 6'-0" CHAIN LINK GATE	SWING DOUBLE	11/A005		DOUBLE FORK W/ PADLOCK EYE & PLUNGER BAR
2	(PR) 8'-0" X 6'-0" CHAIN LINK GATE	SWING DOUBLE	11/A005		DOUBLE FORK W/ PADLOCK EYE & PLUNGER BAR
3	(PR) 4'-0" X 6'-0" CHAIN LINK GATE	SWING DOUBLE	9/A005		ACCESSIBLE GATE

SEE 1 FOR ENLARGED PLAN

Attachment 1

SITE NOTES

1. FOR TYPICAL SYMBOLS AND ABBREVIATIONS, SEE SHEET G001.

2. PROTECT AND SAFEGUARD FROM DAMAGES ALL EXISTING CONSTRUCTION AND FINISHES TO REMAIN.

3. PROVIDE TEMPORARY 6' HIGH CHAIN LINK FENCE ENCLOSURES WITH LOCKABLE GATES AS REQUIRED FOR CONSTRUCTION ACCESS AT CONTRACTOR'S STAGING AREA AND AROUND ALL CONSTRUCTION SITES.

4. WHERE REMOVAL OF CONCRETE WALKS, MOWSTRIPS, CURBS AND GUTTERS IS REQUIRED BY THE EXECUTION OF THIS CONTRACT, REMOVE THE CONCRETE WORK TO THE NEAREST EXISTING EXPANSION OR CONTROL JOINT (SAWCUT IF REQUIRED). CURBS AND GUTTERS MAY BE REMOVED IN MINIMUM LENGTHS OF 6' IF THE DISTANCE BETWEEN EXISTING JOINTS IS 12' OR MORE. REPLACE REMOVED WORK WITH REINFORCED CONCRETE TO MATCH ADJACENT EXISTING WORK IN PROFILE, JOINT LAYOUT AND FINISH. SEE SHEET A004 FOR SIMILAR DETAILS AND REINFORCING REQUIREMENTS. DOWEL NEW CONCRETE WORK INTO EXISTING PER DETAIL 1/-.

5. WHERE ASPHALT PAVING IS DAMAGED BY THE EXECUTION OF THIS CONTRACT, PATCH & REPAIR TO ORIGINAL OR BETTER CONDITION. WHERE (E) LAWNS ARE DAMAGED BY THE EXECUTION OF THIS CONTRACT, FILL, COMPACT, AND REPLANT AREA TO MATCH EXISTING TURF AREA.

6. CONTRACTOR SHALL MAINTAIN EXISTING PLANTING WITHIN THE JOB SITE FENCE ENCLOSURE DURING DEMOLITION AND CONSTRUCTION PHASES. EXISTING IRRIGATION SYSTEMS SHALL EITHER REMAIN OPERATIONAL FOR CONTRACTOR'S USE OR CONTRACTOR SHALL HAND WATER EXISTING PLANT MATERIALS AT LEAST ONCE A WEEK.

7. REPAIR EXISTING IRRIGATION SYSTEMS DAMAGED DURING THE EXECUTION OF THIS CONTRACT. REPLACE PLANT MATERIALS DAMAGED DURING THE CONSTRUCTION PERIOD WITH THE SAME SPECIES OF EQUAL OR GREATER SIZE.

8. SEE GENERAL FENCING NOTES ON SHEET A010.

SITE PLAN LEGEND

(E) BUILDINGS

ACCESSIBLE RESTROOMS
A#04-111180
M=MENS W=WOMENS U=UNISEX

#" THICK CONCRETE PAVING.
SEE CIVIL DRAWINGS

TURF PLAY FIELD AND IRRIGATION

SYNTHETIC TRACK SURFACE

(N) LANDSCAPE AND IRRIGATION

X-X-X

NEW 6' TALL CHAINLINK FENCE.

E.J.

CONCRETE PAVING EXPANSION JOINT PER 1 A003

C.J.

CONCRETE PAVING CONTROL JOINT PER 2 A003

(E) POT PER DSA A#04-111179

●-●-●-●

POT - PATH OF TRAVEL

DESIGN PROFESSIONAL IN GENERAL RESPONSIBLE CHARGE STATEMENT: THE POT IDENTIFIED IN THESE CONSTRUCTION DOCUMENTS IS COMPLIANT WITH THE CURRENT APPLICABLE CALIFORNIA BUILDING CODE ACCESSIBILITY PROVISIONS FOR PATH OF TRAVEL REQUIREMENTS FOR ALTERATIONS, ADDITIONS, AND STRUCTURAL REPAIRS. AS PART OF THE DESIGN OF THIS PROJECT, THE POT WAS EXAMINED AND ANY ELEMENTS, COMPONENTS, OR PORTIONS OF THE POT THAT WERE DETERMINED TO BE NONCOMPLIANT 1) HAVE BEEN IDENTIFIED AND 2) THE DETAILS, DRAWINGS AND SPECIFICATIONS INCORPORATED INTO THESE CONSTRUCTION DOCUMENTS. ANY NONCOMPLIANT ELEMENTS, COMPONENTS, OR PORTIONS OF THE POT THAT WILL NOT BE CORRECTED BY THIS PROJECT BASED ON VALUATION THRESHOLD LIMITATIONS OR A FINDING OF UNREASONABLE HARDSHIP ARE SO INDICATED IN THESE CONSTRUCTION DOCUMENTS. DURING CONSTRUCTION, IF POT ITEMS WITHIN THE SCOPE OF THE PROJECT REPRESENTED AS CODE COMPLIANT ARE FOUND TO BE NONCONFORMING BEYOND REASONABLE CONSTRUCTION TOLERANCES, THEY SHALL BE BROUGHT INTO COMPLIANCE WITH THE CBC AS A PART OF THIS PROJECT BY MEANS OF A CONSTRUCTION CHANGE DOCUMENT.

REVISIONS:

1

2

3

4

5

6

7

8

Date:

03/02/2022

Job:

2132

Scale:

Drawn:

A001

SHEET - OF XXX

XREF:

CHARTRODE BANNON ARCHITECTS

Architecture • Planning • Interior Design
1111 W. LINCOLN AVE., ANAHEIM, CA 92805
TEL: 714.655.8029
FAX: 714.655.8027

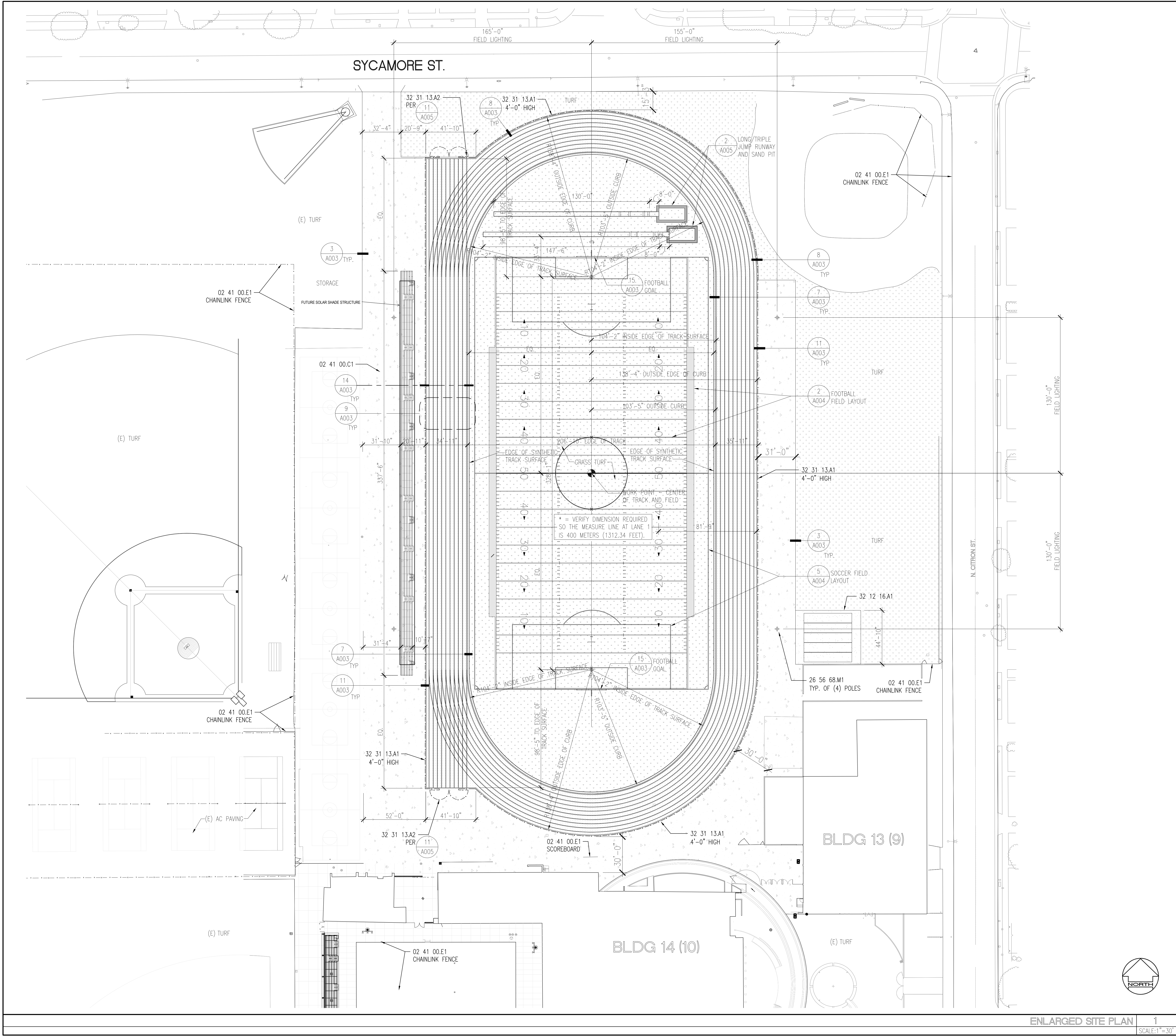
Copyright © 2022 Cascade Bannon Architects, LLP

Architect Seal

ANAHEIM HIGH SCHOOL
TRACK AND FIELD IMPROVEMENTS

811 W. LINCOLN AVE., ANAHEIM, CA 92805
ANAHEIM UNION HIGH SCHOOL DISTRICT

OVERALL SITE PLAN
SCHEMATIC DESIGN



KEYNOTES

DIVISION 02 - EXISTING CONDITIONS

- 02 41 00.C1 - REMOVE EXISTING C.L. FENCE INCL. FABRIC, POSTS, RAILS, & FOOTINGS
02 41 00.E1 - EXISTING ITEM & FINISHES TO REMAIN

DIVISION 26 - ELECTRICAL

- 26 56 68.M1 - EXTERIOR ATHLETIC POLE MTD. LIGHTING

DIVISION 32 - EXTERIOR IMPROVEMENTS

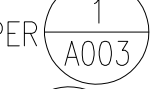

- 32 12 16.A1 - HOT-MIX ASPHALT PAVING
32 31 13.A1 - CHAINLINK FENCE
32 31 13.A2 - CHAINLINK GATE

SITE NOTES

- FOR TYPICAL SYMBOLS AND ABBREVIATIONS, SEE SHEET 0001.
- PROTECT AND SAFEGUARD FROM DAMAGES ALL EXISTING CONSTRUCTION AND FINISHES TO REMAIN.
- PROVIDE TEMPORARY 6' HIGH CHAIN LINK FENCE ENCLOSURES WITH LOCKABLE GATES AS REQUIRED FOR CONSTRUCTION ACCESS AT CONTRACTOR'S STAGING AREA AND AROUND ALL CONSTRUCTION SITES.
- WHERE REMOVAL OF CONCRETE WALKS, MOWSTRIPS, CURBS AND GUTTERS IS REQUIRED BY THE EXECUTION OF THIS CONTRACT, REMOVE THE CONCRETE WORK TO THE NEAREST EXISTING EXPANSION OR CONTROL JOINT (SAWOUT IF REQUIRED). CURBS AND GUTTERS MAY BE REMOVED IN MINIMUM LENGTHS OF 6' IF THE DISTANCE BETWEEN EXISTING JOINTS IS 12' OR MORE. REPLACE REMOVED WORK WITH REINFORCED CONCRETE TO MATCH ADJACENT EXISTING WORK IN PROFILE, JOINT LAYOUT AND FINISH. SEE SHEET A004 FOR SIMILAR DETAILS AND REINFORCING REQUIREMENTS. DOWEL NEW CONCRETE WORK INTO EXISTING PER DETAIL 1/-.
- WHERE ASPHALT PAVING IS DAMAGED BY THE EXECUTION OF THIS CONTRACT, PATCH & REPAIR TO ORIGINAL OR BETTER CONDITION. WHERE (E) LAWNS ARE DAMAGED BY THE EXECUTION OF THIS CONTRACT, FILL, COMPACT, AND REPLANT AREA TO MATCH EXISTING TURF AREA.
- CONTRACTOR SHALL MAINTAIN EXISTING PLANTING WITHIN THE JOB SITE FENCE ENCLOSURE DURING DEMOLITION AND CONSTRUCTION PHASES. EXISTING IRRIGATION SYSTEMS SHALL EITHER REMAIN OPERATIONAL FOR CONTRACTOR'S USE OR CONTRACTOR SHALL HAND WATER EXISTING PLANT MATERIALS AT LEAST ONCE A WEEK.
- REPAIR EXISTING IRRIGATION SYSTEMS DAMAGED DURING THE EXECUTION OF THIS CONTRACT. REPLACE PLANT MATERIALS DAMAGED DURING THE CONSTRUCTION PERIOD WITH THE SAME SPECIES OF EQUAL OR GREATER SIZE.
- SEE GENERAL FENCING NOTES ON SHEET A010.

SITE PLAN LEGEND

- (E) BUILDINGS
- ACCESSIBLE RESTROOMS
A#04-111180
M=MENS W=WOMENS U=UNISEX
- #" THICK CONCRETE PAVING.
SEE CIVIL DRAWINGS
- TURF PLAY FIELD AND IRRIGATION
- SYNTHETIC TRACK SURFACE
- (N) LANDSCAPE AND IRRIGATION
- X—X—X— NEW 6' TALL CHAINLINK FENCE.

- E.J. CONCRETE PAVING EXPANSION JOINT PER  A003
- C.J. CONCRETE PAVING CONTROL JOINT PER  A003

ANAHEIM HIGH SCHOOL TRACK AND FIELD IMPROVEMENTS

811 W. LINCOLN AVE., ANAHEIM, CA 92805
ANAHEIM UNION HIGH SCHOOL DISTRICT

ENLARGED SITE PLAN

REVISIONS:

1	
2	
3	
4	
5	
6	
7	
8	

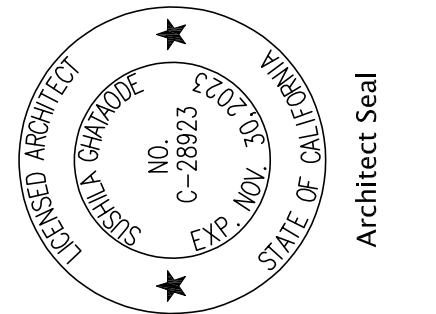
Date: 03/02/2022
Job: 2132
Scale:
Drawn:

A002

SHEET - OF XXX
XREF:

CHOTRODE BANNON ARCHITECTS

Architecture • Planning • Interior Design
1000 N. GATEWAY AVE., SUITE 100
COSTA MESA, CA 92627
Tel: 714.655.8029



Consultant Seal

Copyright © 2022 Chotrode Bannon Architects, LLP

ENLARGED SITE PLAN 1
SCALE: 1"=30'